

I. Inspection Summary

Model Name:	H2750iS	Inspection Date:	10-11 December 2022
Product Type:	Generator	Supervised by:	SGS-CSTC Standards Technical Services Co., Ltd
Product Color:	Black	Supplier Name	JB Mask sp. Z o.o. Johanna Straussa 2/1,52-129 Wroclaw, Poland EORI : PL899289476500000
Lot Qty:	512 pcs	Contact person	Lilliann-ln.Li@sgs.com
Sampling lot	52 pcs		

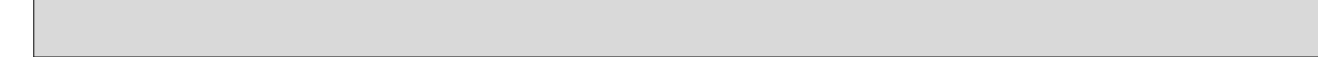
Product Photos:



II. Quantity information

For tests checked 11 devices – no problem found, check results in excel sheets.
 For visual checked 52 pcs – no problem found

III. Defect Pictures



SGS-CSTC Standards Technical Services Co., Ltd.

NIL

V. Remark

NIL

IV. Product Checking item

Generator H2750iS

Item	Specification	Result
Gift Box Weight Check, kg	x	21.7
Device Weight Check, kg	x	19
Gift Box Size Check, cm	x	57*36.5*55.5
Device Size Check, cm	x	46*26.5*46

V. Photos of Packing and Common check

Generator H2750iS



All Packing



All Packing



Selection

NIL

Master Box View



Selection

NIL

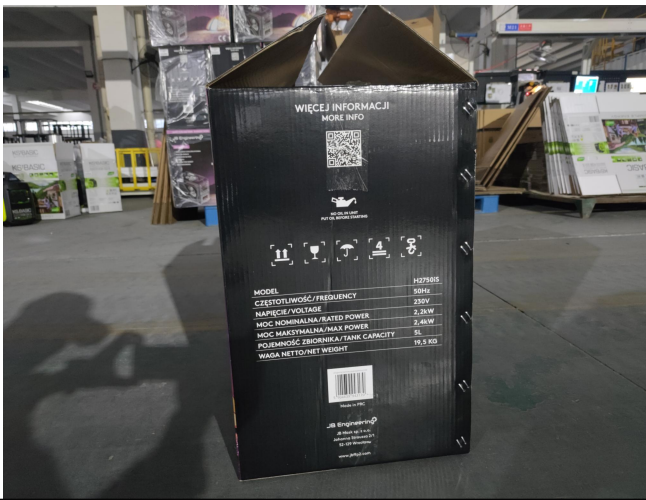
Master Box View



Gift Box



Gift Box



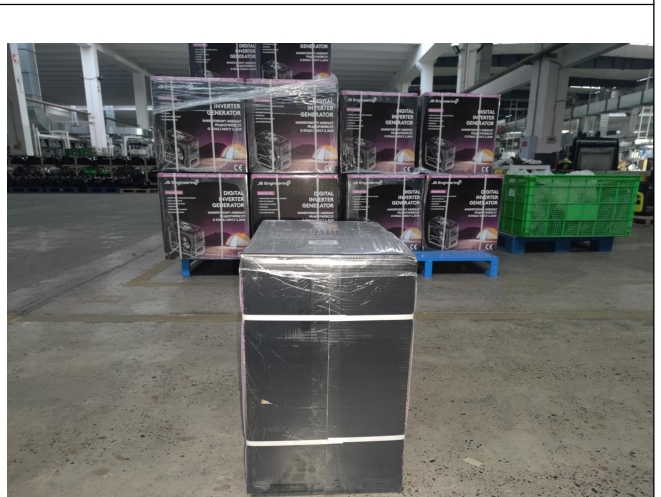
Gift Box



Gift Box



Gift Box



Gift Box

SGS-CSTC Standards Technical Services Co., Ltd.



Open Gift Box



Open Gift Box



Device



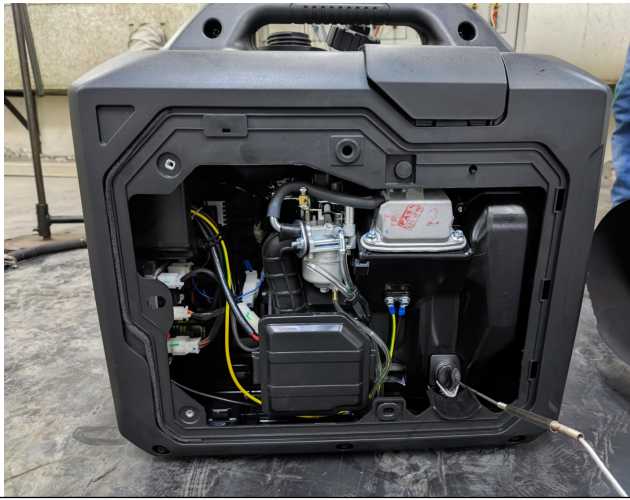
Device



Device



Device



Hardware Check



Details



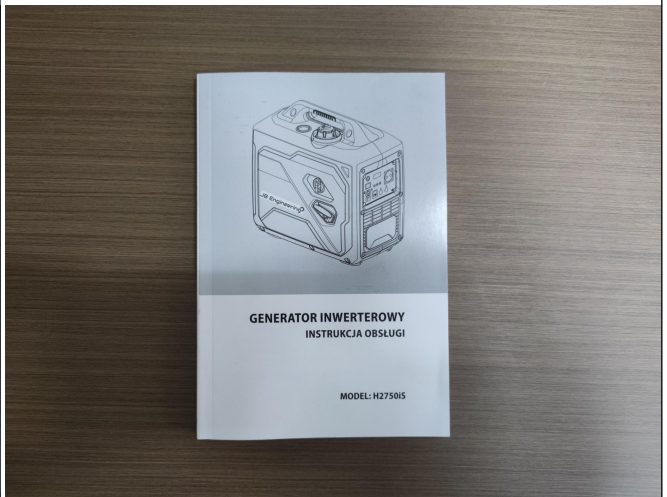
Device



Device



Accessories check



Accessories check

SGS-CSTC Standards Technical Services Co., Ltd.



Gift Box Weight Check



Device Weight Check



Functions check



Functions check



Functions check

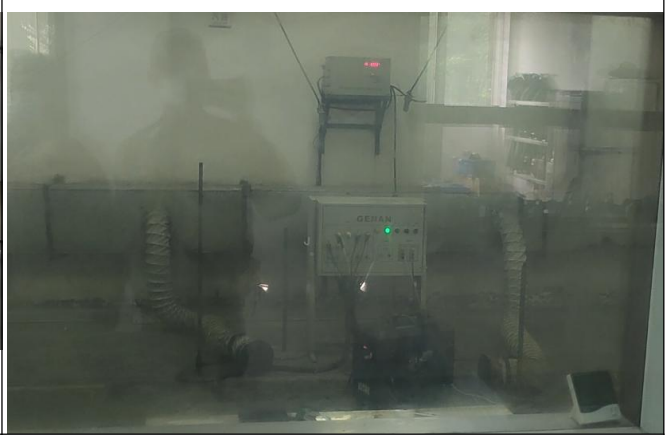


Functions check

SGS-CSTC Standards Technical Services Co., Ltd.



Functions check



Functions check



Functions check



Functions check



Functions check



Functions check

-----the End of Report-----

Generator set extraction inspection project

NO.	Random inspection items	inspection method	INSPECTION CRITERIA	sampling%	
1	Assembly for appearance	Box carving pattern confirmation	visual check	Check Finished Product Status Table	2%
		Assembly status of each component:			
		○ neglected loading	visual check	Check Manufacturing BOM Form	2%
		○ Spark plug plug check	action	Assembly in place without falling off	2%
		○ Cable socket status of each component	action	Plug firmly, reliable, no loose.	2%
		Complete machine packaging:			
		○ Packing box inside and outside assembly	visual check	check (bom data)	2%
		○ Packing accessories/information	visual check	check (bom data)	2%
		○ Bar code/shipping mark confirmation	visual check	check (Finished product status)	2%
		○ Confirm the status of the packing tape	visual check	check (Finished product status)	2%
		○ Confirm the status of the packing tape	Measure the size and weight	check (bom data)	2%
		Appearance			
		Air hood/recoil hand start confirmation	visual check	check (bom data)	2%
		Muffler appearance confirmation	visual check	check (bom data)	2%
		Confirm the appearance of the air filter	visual check	check (bom data)	2%
		Label class paste status	visual check	check (bom data)	2%
		Tubing status confirmation	visual check	check (bom data)	2%
Tubing status confirmation	visual check	check (bom data) . tightening	2%		
Tank status confirmation	visual check	check (bom data)	2%		
Carburetor drain bolt confirmation (loose/tight)	Use a torque wrench to measure	check (torquemeter)	2%		
2	startability	Manual start 53 times/set	action	Chillers: manual start within 3 times/electric start within 30 seconds Internal heat engine: manual start within 3 times/electric start within 30 seconds	2%
		Start the pull cord to reset	action	Rebound normal, no stuck.	2%
3	runnability	Speed confirmation (idle/high speed)	Test with a revolution table	Check Test Standards	2%
		Buzz and rattle	Examination of hearing	No abnormal sound	2%
		Continuous operation (driving, vomiting)	visual check	No vomiting occurs	2%
4	switching device	circuits assembly line status	visual check	Binding firmly standard, not messy.	2%
		Flameout switch (failure or not)	action	work fine	2%
5	oil burning arrangement	fuel leakage	The fuel tank is filled with gasoline.	No leakage occurs	2%
		Carburetor fuel leak	After filling the fuel tank with gasoline, turn on the oil switch to fuel the carburetor.	No leakage occurs	2%
		Fuel tank leak	After filling gasoline, check whether there is any leakage of gasoline in the fuel tank (especially the welding).	No leakage occurs	2%
6	engine oil device	combustion area oil leakage	visual check	No leakage occurs	2%
		Oil seal sealing performance	visual check	No leakage occurs	2%
		Oil protector function	action	work fine	2%
7	Function and performance test of generator products	no-load speed	TEST	accord with (machine assembly testing standard)	2%
		idling frequency	TEST	accord with (machine assembly testing standard)	2%
		no load voltage	TEST	accord with (machine assembly testing standard)	2%
		Rated load power	TEST	accord with (machine assembly testing standard)	2%
		Rated load voltage	TEST	accord with (machine assembly testing standard)	2%
		rated load current IL	TEST	accord with (machine assembly testing standard)	2%
		Rated load frequency	TEST	accord with (machine assembly testing standard)	2%
		Rated load speed	TEST	accord with (machine assembly testing standard)	2%
		Maximum load power	TEST	accord with (machine assembly testing standard)	2%
		Maximum load voltage	TEST	accord with (machine assembly testing standard)	2%
		Maximum load current	TEST	accord with (machine assembly testing standard)	2%
		Maximum load frequency	TEST	accord with (machine assembly testing standard)	2%
		frequency step down	TEST	accord with (machine assembly testing standard)	2%
		electric generator 0%. 25%. 50%. 75%. 100%	TEST	accord with (machine assembly testing standard)	2%
		Dc output voltage (with DC output generator)	TEST	accord with (machine assembly testing standard)	2%
Energy saving state	TEST	accord with (machine assembly testing standard)	2%		
Heat protector test	TEST	accord with (machine assembly testing standard)	2%		
Short circuit protector test	TEST	accord with (machine assembly testing standard)	2%		
Oil protector test	TEST	accord with (machine assembly testing standard)	2%		
8	on-load running test	Rated power rating hour Run for 1 hour	Test	Operation process, abnormal sound, oil leakage, power shortage and other phenomena	2%
				amendment	✓
				proofread	✓
				Audit	✓
				approve	✓



More photos and videos about inspection product check in the folders

SGS 检验指南及通知

SGS INSPECTION INSTRUCTION AND ADVICE

1、需要贵公司在5-7个工作日前通知检验日期以便及时安排。

5-7 working days advance notice is appreciated for our arrangement.

2、通常， 货品生产状态需符合下列要求：

Production status for inspection should meet the following requirement:

生产初期检验： 大约10%货品已完成生产；并至少有50套已完成货品可供检查。
Initial Production Check About 10% good was finished and at least 50 units finished products ready for inspection (IPC): inspection.

生产中后期检验： 大约30%—50%货品已完成生产，其余货品正在生产中。
During Production Check About 30%-50% finished product should be ready for inspection, with the balance (DUPRO): under production.

成品终期检验： 100%货品已完成全部生产过程(所有生产程序已完成，包括生产、后整、独立包装、内部QC检验等工序)；并至少有80%货品完成最终包装且已装箱完毕(其余部分正处于装箱阶段)。若配件来自不同工厂，须集中到检验地点等候检验。
Final Random Inspection 100% production finished(all the production process are finished, including (FRI): production, after treatment, individual packing and factory QC check), and at least 80% packed into cartons, with balance under packing stage should be ready for inspection. All accessories from different factories should be gathered to Inspection location for inspection.

入柜监装： 全部货品已完成最终包装，集装箱已在服务现场等待入柜。
Loading Supervision (L/S): Supervision of loading of goods into container(s) can be done on same day.

3、请贵公司配合SGS廉政政策。 Please cooperate us with SGS Integrity Policy.

4、如果出现下列情况，SGS将视其为“检验放空”，并收取申请人相关费用另加实际交通费用(根据地点远近)。
In the following status, the intervention will be regarded as a "Missed or aborted Inspection" and a fee will be charged at your cost. The fee is for a "Missed/Aborted Inspection" plus travelling expenses at cost.

① 当SGS检验员到达服务现场时货品生产状态不能达到上述检验要求(申请人特殊要求需传真作实)；
The production status cannot meet the above mentioned requirements when our inspectors arrive at the inspection location (the applicant should confirm the special requirement by fax.)

② 待检货物的堆放不规范，纸箱之间间隙不足，SGS检验员不便进行随机抽箱；且工厂无法在不影响检验安排的情况下，使箱堆达到可进行随机抽箱的状态；
The space between cartons is not sufficient so SGS inspector could not select it randomly; and the factory could not meet the stacking requirement of select carton randomly in case of do not obstruct the inspection.

③ 由于申请人原因使得SGS检验员不能进行服务；
SGS inspector can not execute the service because of the applicator's reason.

④ 申请人于检验当天要求取消服务。
The applicant request to cancel the service on the same day for inspection.

5、纺织品检验现场须满足以下条件：

Inspection location should meet the following requirements for the textile product:

服装或其他产品检验： 一张干净的检验台尺寸为 宽1.5~2米、长2~3米、高0.8/0.9米，充足的室内光源(非黄光，照度≥750LUX符合要求，400LUX≤照度<750LUX为轻微不符合，照度<400LUX为严重不符合)
Garment or other product A clean inspection table , width 1.5–2m X length 2-3m X height 0.8-0.9m, sufficient inspection: room light (not yellow light, Lumen≥750Lux conform the requirement; 400Lux≤Lumen<750lux lightly not conform; Lumen<400Lux seriously not conform),



面料检验:
Fabric inspection:

一台验布机和一张干净的检验台(宽2米、长3米、高0.8/0.9米),充足的室内光源(非黄光,照度要求 $\geq 750\text{LUX}$, $600\text{LUX} \leq \text{照度} < 750\text{LUX}$ 为轻微不符合,照度 $< 600\text{LUX}$ 为严重不符合)

A fabric inspection machine and a clean inspection table(width 2m X length 3m X height 0.8-0.9m), sufficient room light (not yellow light, Lumen $\geq 750\text{Lux}$ conform the requirement; $600\text{Lux} \leq \text{Lumen} < 750\text{lux}$ lightly not conform; Lumen $< 600\text{Lux}$ seriously not conform),

如果在检验现场不能满足以上条件,现场情况将被写在检验报告中如实报告给贵公司客户。

The inspection conditions will be reported to client if it could not meet the above requirement during inspection.

如现场照度为严重不符合,SGS检验员将不执行检验,当场通知办公室和客户等待进一步指示。

The Inspector will not execute the inspection and inform SGS office or client if the lumen could not meet above requirement.

6、请准备检验所需的校准有效或检定合格的设备,并提供相关的校准报告或检定证书以供验证:

Please prepare the necessary calibrated equipment for inspection, and provide the related calibration certificate.

7、请粘贴一套完整的标贴、吊牌、塑料袋印刷语在白纸上,现场交予SGS检验员。

Please attach one full set of labels, hangtags, and poly bag on a white paper and provide to inspector before inspection.

8、在检验之前,请事先向在服务现场的检验员提供详细的装箱单(如当时只有80%的货物完成装箱请提供临时装箱单)。我们将随机抽箱并抽样,并请通知工厂提供人力协助抽箱,拆胶袋等工作。服务现场所得到的结果仅作参考。

Packing list should be available for inspection (temporary packing list is fine if only 80% is packed). We will select carton randomly and draw samples for inspection. Please inform labor for help us load carton and open the poly bag. Results obtained on site are provisional.

9、在检验过程中有些测试将会是破坏性的,例如:对于吸塑包装的外观检查,运输跌落测试,温度保险丝的熔断测试,服装的克重测试等,请知悉,如有疑问,请联系我们。

Please note some test may cause damage to the product, ex. appearance check for clamshell package, transportation drop test, thermal fuse cut off check, fabric weight test, please contact us if you have any query.

10、SGS检验员会在工厂抽取缺点样或出货样回公司。缺点样或出货样会被进一步确认或按要求寄给客人。缺点样或出货样不会被退回,如有异议,请联系我们。

Please note that SGS inspector will draw defect or shipment samples from the factory, this samples may be further checked or sent to client at their request. Defect or shipment samples will not be returned, please contact us with any question.

11、如确需加班工作,SGS将按规定收取加班费用,特别安排除外。

If overtime work is needed, SGS OT time and charge will be charged at your cost, except the special arrangement.

12、请告之您是否需要通标公司之检验证书以作信用证议付之用。如需要,我们则必须得到信用证申请人的同意才可以出具相应检验证书。同时,出具检验证书需要贵公司将信用证、装箱单、发票的复印传真到我公司。如信用证申请人不同意出证,我们将只出具一份不能用来议付的实际检验报告给贵司。SGS没有权力决定您是否可以发货。

Please advise if you need SGS inspection certificate to negotiate a Letter of Credit. If so, we need L/C applicant's confirmation in advance to start the issuance of inspection certificate. Also copies of the following document will be required, I.E. Invoice, Packing list, Letter of credit. If L/C applicant does not confirm, we will only issue another document called Non-Negotiable actual finding report. Please note that we do not have the authority to approve shipment.

▶ 请同时通知贵公司工厂以上所有内容,并请签字盖章传真或扫描邮件回复以示贵公司同意以上所述。

Please also inform your factory of all above information and confirm your understanding by return with signature & chop via fax or email.

如有不明之处,请来电/函联系。Please do not hesitate to contact us if you have any query.

谢谢! Thanks & best regards.

----- the End of Report-----